

Customer Distribution

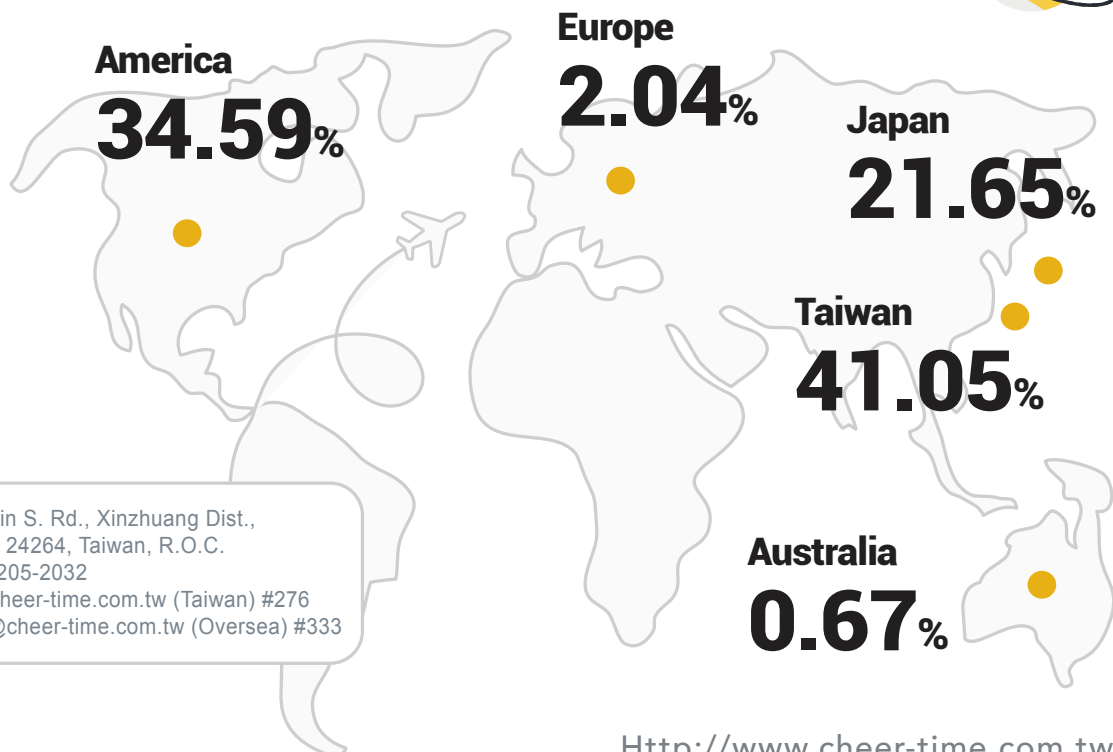
We export all over the world.

Founded 1987, over 30+ years' experience in PCB.
Monthly Capacity : 200,000 Square Feet
Engineer : 3 shift, 24 hours
Handling quickly Quick turn for HDI PCBs Small volumes & Large-variety Production.

ISO-9001 ISO-14001 、 IATF-16949 & QC-080000 certified



Our Business Distribution



No. 311, Qionglin S. Rd., Xinzhuang Dist.,
New Taipei City 24264, Taiwan, R.O.C.
TEL : +886 2 2205-2032
oscar.cheng@cheer-time.com.tw (Taiwan) #276
wesley.chiang@cheer-time.com.tw (Oversea) #333

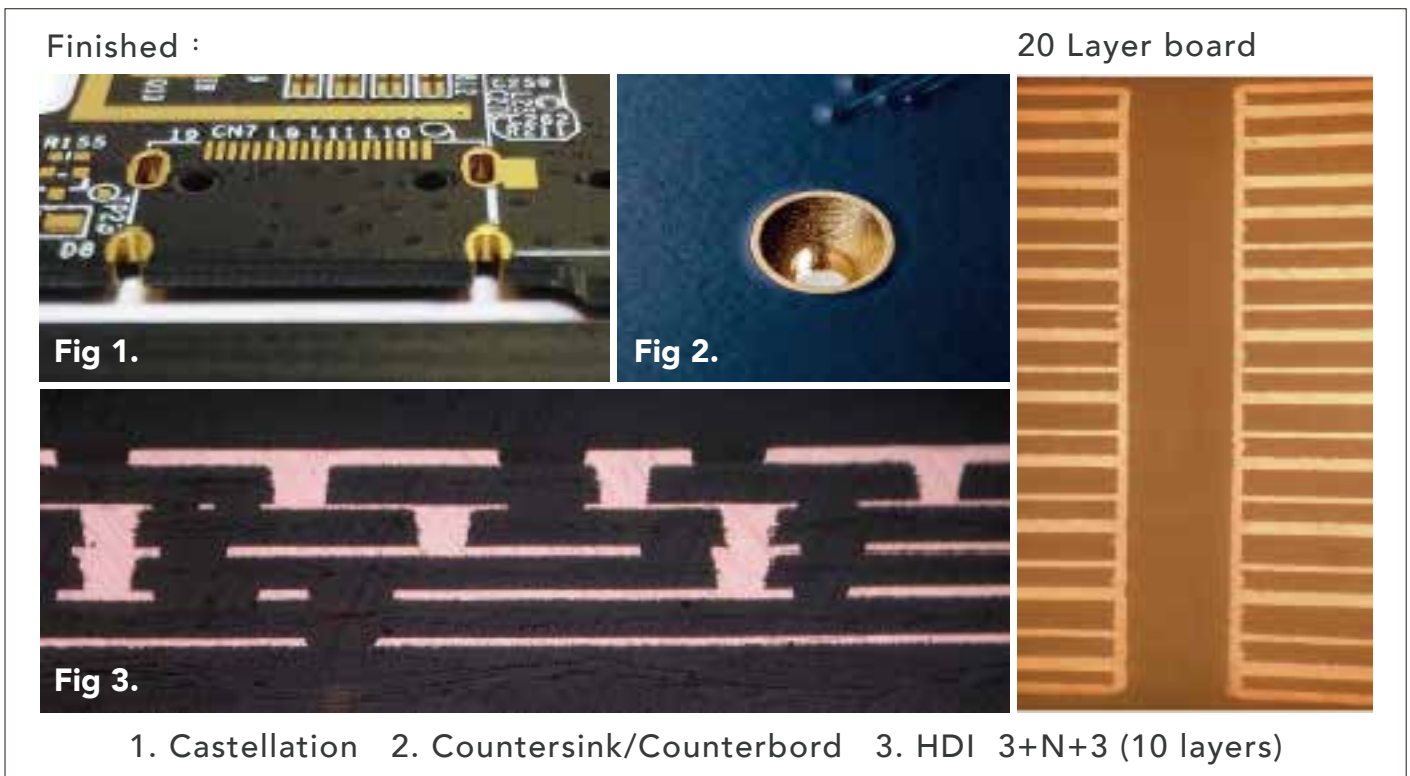
Capability :

Up to 28 layer board, 0.4 ~ 5.0 mm thickness, 0.5 ~ 4.0 oz copper

FR-4 Tg130~Tg180 \ Halogen Free \ Rogers \ Teflon(PTFE) \ Aluminum Leaded finish \ ENIG \ Immersion Silver \ Immersion Tin \ OSP \ Gold Plating Minimum Trace : 3 / 3 mil, Minimum Ring : 3 mil

Minimum via : 6 mil (Mechanic) / 4 mil (Laser)

Counter sink / Counter bore / Plating Castellation



HDI (High Density Interconnect) PCB 3 + N + 3

Blind vias (Laser drilling) : 0.1 mm / Filled with plated copper

Buried vias (Mech drilling) : 0.15 mm (min.) / Filled with epoxy

